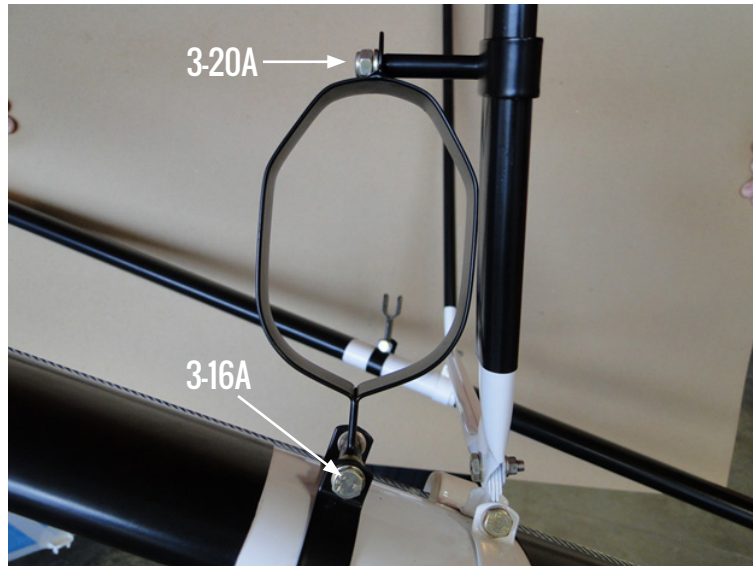


GUN BOOT INSTALLATION INSTRUCTIONS

STEP 1

Install front clamp.

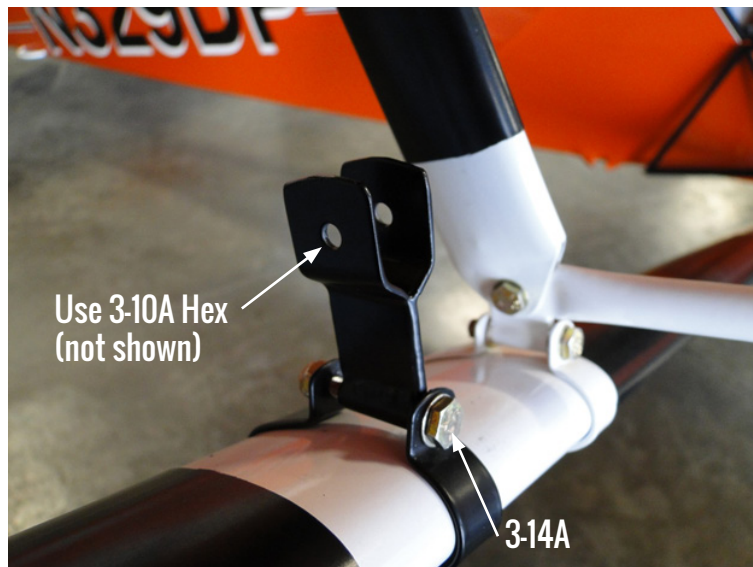
Do not fully tighten yet.



STEP 2

Install rear clamp plus saddle.

Do not fully tighten yet.



STEP 3

Insert gun boot into barrel band.



STEP 3a

Place aft portion of gun boot into saddle.



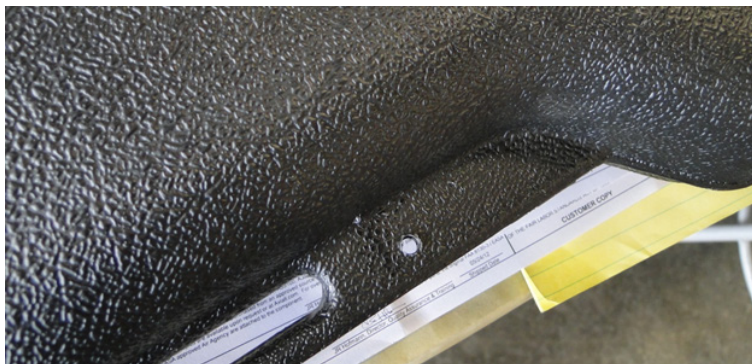
STEP 4

Mark hole.



STEP 5

Drill hole using #11 or 3/16 drill bit.



STEP 6

Reassemble bolt through saddle clamp. Do not fully tighten. Install upper jury strut clamp and mark for upper hole.



STEP 6a

Drill hole #11 or 3/16.



STEP 7

Reinstall, realign and tighten all bolts.



NOTES

Install with all hardware loose, then align and tighten.

Some extra washers have been included for spacers as not all Cubs are the same. One extra nut has been included to replace the one you drop in the lake or dirt.

Installation should take about 15 minutes with no power tools. Hole can be drilled by hand with patience and a little time.

